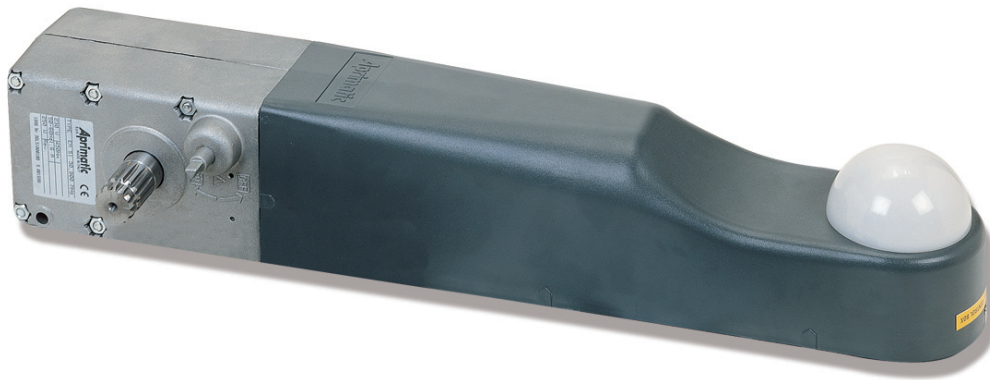


ALZO



Electro-mechanical operator for counterweight
up-and-over doors.
Residential use.

Maximum anti-crush safety thanks to an on-board electronic control with electronic torque control and (switchable) anti-crush system.



Slowdown system for gradual approach at the end of opening and closing movements, preventing banging and unnecessary structural stress.

(Optional) external emergency release for access to the garage in the event of a power failure.

Timed courtesy light incorporated in the operator to light the garage during door opening and closing.

Carefully selected top quality materials. Drive components in steel, gear motor body in die-cast aluminium, and equipment cover in ABS. IP 44 protection rating.

This is one of the best operators on the market in terms of performance. The torsional force of 450 Nm that it develops makes it suitable for automating counterweight up-and-over doors of the following sizes:

- 3.5 x 3 m using just one motor;
- 5 x 3 m or with pedestrian door using two motors.

Technical Data

POWER SUPPLY	230V 50 Hz
POWER ABSORBED	250 W
CURRENT ABSORBED	1,6 A
OVERLOAD TEMPERATURE	150° C
OPERATING TEMPERATURE	-20°/+70° C
NOMINAL TORQUE	450 Nm
INTERMITTENT USE	50%
OPENING TIME	17 sec
PROTECTION RATING	IP 44