

# AT 56

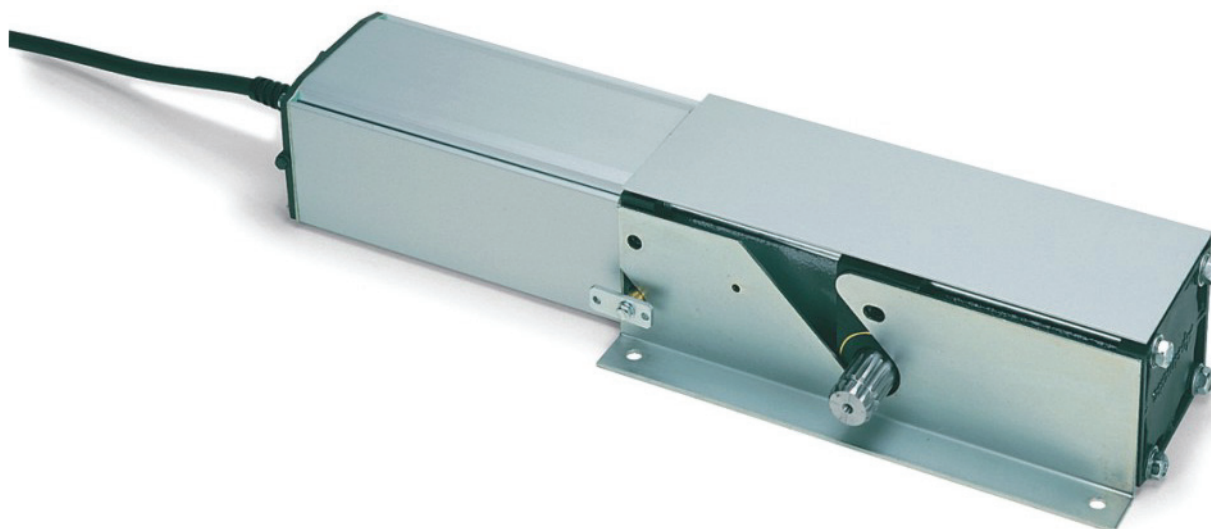


FOLDING  
DOORS

Hydraulic operator for folding doors.  
Residential, condominium and intensive use.



**Anti-crush system with very sensitive by pass valves calibrated during installation. This immediately cuts the hydraulic pressure in the event of obstacles to ensure maximum safety.**



## Technical Data

MOTOR POWER SUPPLY	230V 50Hz
POWER ABSORPTION	250 W
OPERATING TEMPERATURE	-20°/+70° C
MAX WING LENGTH	1,5 m
ANTI-CRUSH SAFETY	by pass valves
NUMBER OF DAILY CYCLES	50
NUMBER OF CYCLES/HOUR	10
LUBRICATION TYPE	AprimOil DN 22
PROTECTION RATING	IP 44