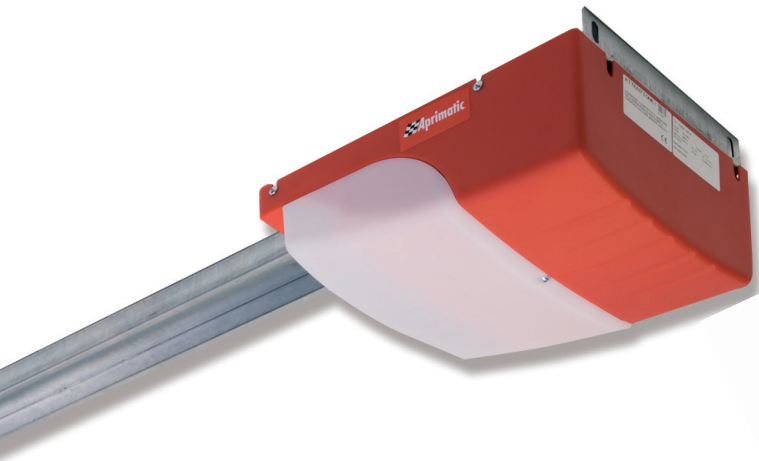


TIRO NG

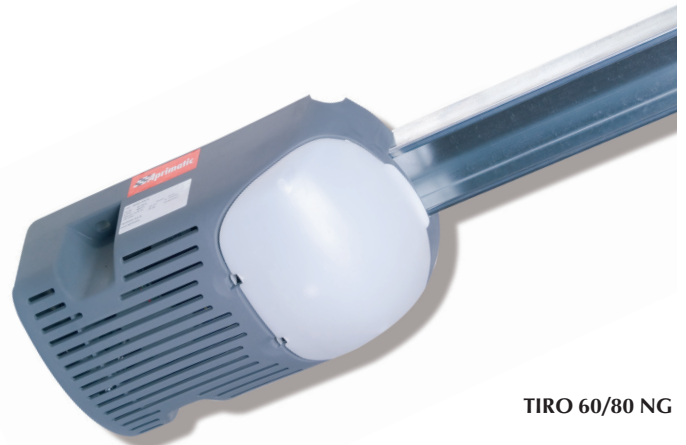


24V electro-mechanical operator for sectional and counterweight up-and-over garage doors. Residential use.

Maximum anti-crush safety is ensured by an on-board electronic control unit with auto-reverse on collision with any obstacle.



TIRO 120 NG



TIRO 60/80 NG

TIRO NG 80/120 can also be used to automate counterweight up-and-over doors if installed with curved arms.

Controlled slowdown system for gradual approach at the end of opening and closing movements, preventing banging and unnecessary structural stress.

Timed courtesy light incorporated in the operator to light the garage during door opening and closing.

Chain drive guarantees excellent reliability and wear resistance.

All models include a release device as standard.

Technical Data Tiro 60 NG Tiro 80 NG Tiro 120 NG

POWER SUPPLY	230V 50 Hz	230V 50 Hz	230V 50 Hz
FORCE APPLIED	600N	800N	1200N
LINEAR SPEED	12 cm/sec	14 cm/sec	14 cm/sec
DRIVE	Chain	Chain	Chain
TOTAL LENGTH	3210	3210	3210
USEFUL TRAVEL (3 METRE GUIDE)	2400 mm	2550 mm	2550mm
MINIMUM INSTAL. DISTANCE	35mm	35mm	35mm
WEIGHT	Approx 18 Kg	Approx 18 Kg	Approx 20 Kg